

BEFORE & AFTER



Romberg Syndrome
42cc Hybrid SVF fat injection
Single Session



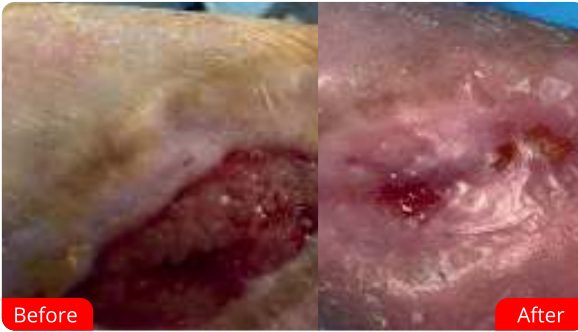
SVF Enhanced Facelift
19cc Hybrid SVF fat injection
Single Session



Ageing Treatment
36cc Hybrid SVF fat injection
Single Session



Liposuction Defect
80cc SVM
Single Session



Buerger Disease
60cc SVM
Single Session



Total Mastectomy
270cc SVM
Single Session

with courtesy of Dr. Tunc Tiryaki, Dr. Steve Cohen and Dr. Alper Erkin



Dr. Steven R. Cohen



Dr. Michael Scheftan



Dr. Kai-Uwe Schlaudraff



Dr. Aris Sterodimas



Dr. Tunc Tiryaki



www.lipocube.com

LIPOCUBE

Kennington Lane 239-241
London UK SE11 5QU
+44 (78) 1001 8871
info@lipocube.com

LIPOCUBE
HYBRID

Mechanical SVF Isolation Device

**LAB
IN THE
BOX**

Autologous | Enzyme Free | Single Use | Easy to Use



ADVANTAGES

Miniumum malipulation
of cell

Head to head
cell counts

Easy to use

No GMP Facility

Short isolation time

No need for expert staff

Cost efficient

LIPOCUBE HYBRID



Stromal Vascular Fraction (SVF) is a heterogeneous collection of cells found within adipose tissue. The SVF is created when adipose cells, connective tissue and blood are removed from lipoaspirate.

Lipocube Hybrid is a state-of-art technology in mechanical processing of adipose tissue to SVF extraction.

FIELDS OF APPLICATION



Anti Ageing



Orthopaedics



Urology



Diabetic Ulcers



Gynecology



Wound Care



Dermatology



Basic science in
Regenerative Medicine

HEAD TO HEAD CELL COUNTS COMPARED TO ENZYMATIC DIGESTION



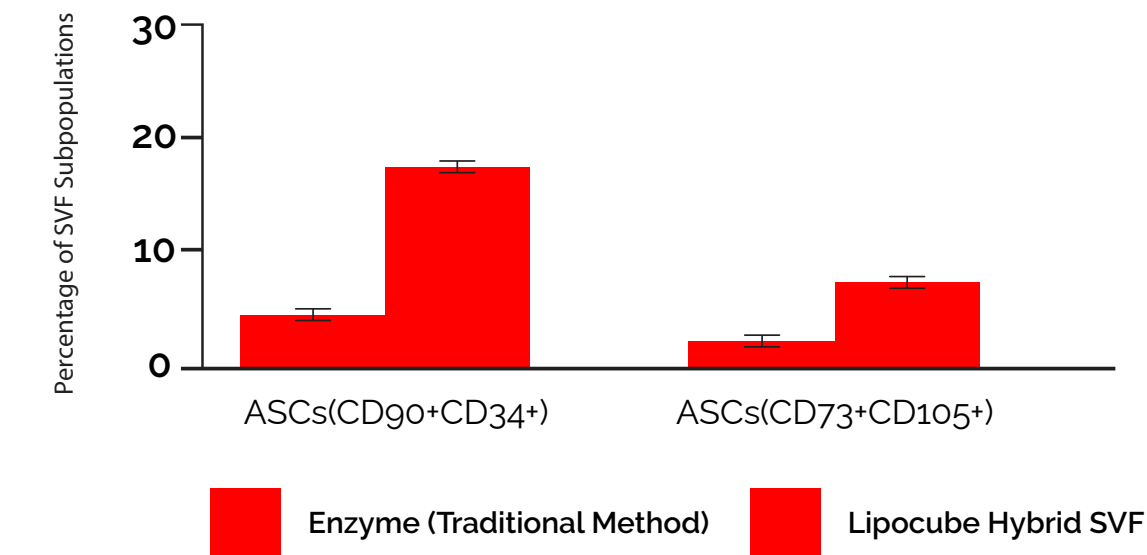
Autologous fat is harvested from patient without the need of general anesthesia. The fat tissue is mechanically digested using the **Lipocube™ HYBRID** in closed sterile system. The mechanical digested SVF is centrifuged in specially designed **Cell Drive**. The concentrated SVF is separated and applied to the patient.

SCIENTIFIC BACKGROUND

| CELL NUMBER AND CELL VIABILITY RESULTS | Cell Number/cc (x10 ⁶) | Cell Viability (%) |
|--|------------------------------------|--------------------|
| Lipocube Hybrid SVF | 1,79 | 96,2 |
| Enzyme (Traditional Method) | 1,85 | 95,72 |

Lipocube Hybrid SVF contains approximately the same number of nucleated cells as enzymatic method.

FLOW CYTOMETER RESULTS

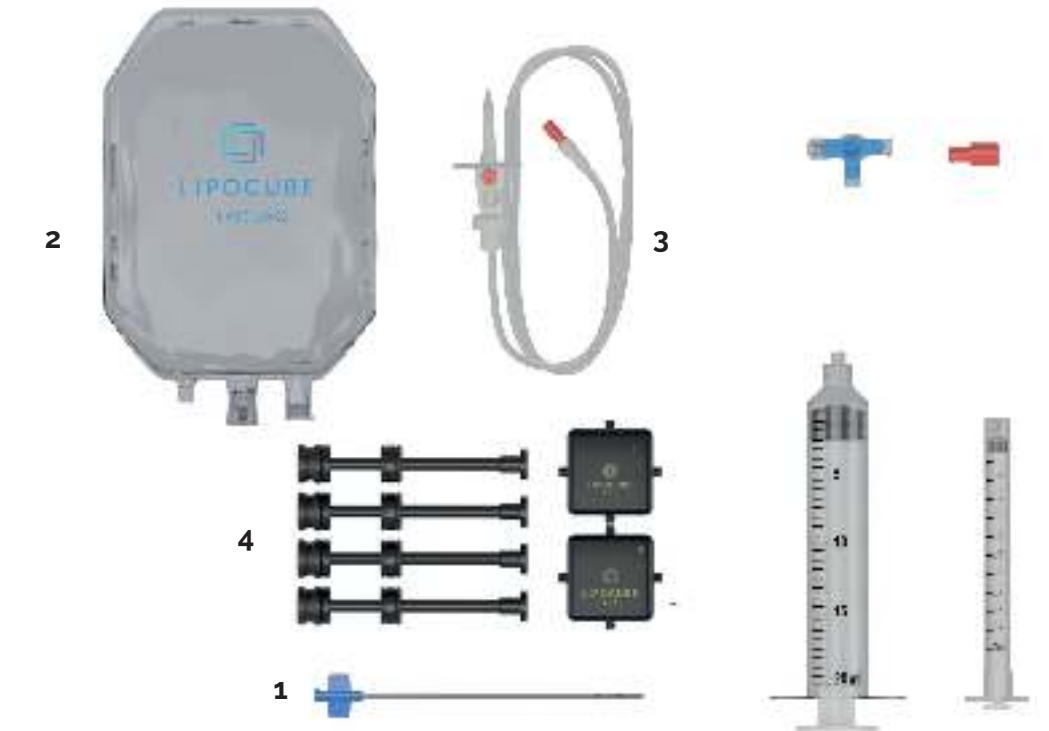


Flow cytometer analysis of SVF subpopulations

Due to high cell yield and cellular activity, Lipocube Hybrid has a higher regenerative power.

LIPOCUBE SVF KIT

Lipocube products provide washing, fragmentation and transferring of autologous adipose tissue in a closed environment.



The fat is collected from the body with the fat harvesting cannula (1) in a closed system. The adipose tissue is washed in a closed system with the help of transfer bag (2) and transfer line (3). The washed fat is processed through Lipocube Hybrid (4) to obtain concentrated fat. The concentrated fat can be injected to the patient with 25G injector.