

LIPOCUBE HYBRID

Stromal Vascular Fraction (SVF) refers to a diverse collection of cells within adipose tissue. The SVF is derived by separating adipose cells, connective tissue, and blood from lipoaspirate.

LipoCube Hybrid is a state-of-the-art technology used for the mechanical processing of adipose tissue, enabling efficient extraction of Stromal Vascular Fraction (SVF).

FIELDS OF APPLICATION



Anti Aging



Orthopedics



Regenerative Urology



Diabetic Ulcers



Regenerative Gynecology



Wound Care



Dermatology



Regenerative Medicine

THE PROCEDURE

A simple, fast and effective technology to wash, process and concentrate regenerative cell population in a non-invasive step, resulting in a minimally manipulated tissue for regenerative applications



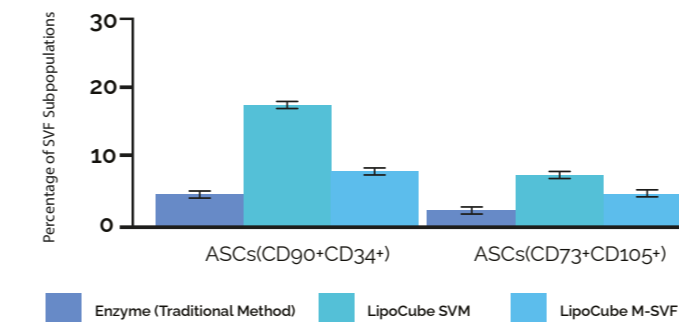
Autologous fat is obtained from the patient under sedation / local / general anaesthesia. The fat tissue is mechanically digested using the LipoCube Hybrid within a closed and sterile system. Subsequently, the mechanically digested Stromal Vascular Fraction (SVF) is centrifugated in the Cell Drive. The isolated SVF is applied to the patient.

SCIENTIFIC BACKGROUND*

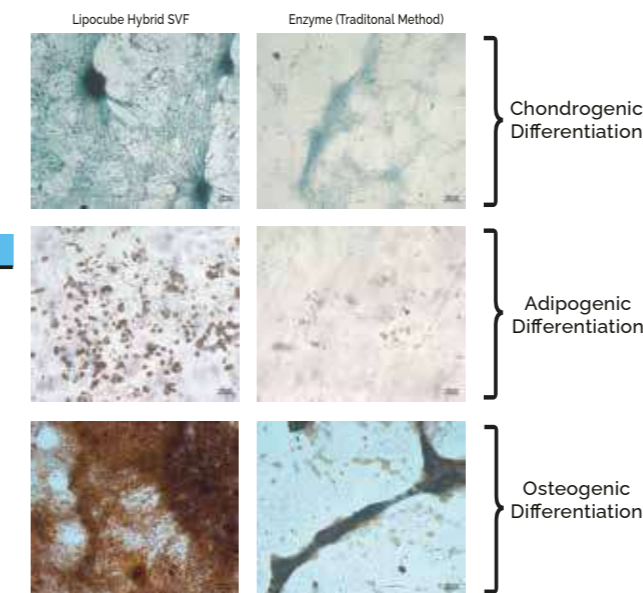
CELL NUMBER AND CELL VIABILITY RESULTS	Cell Number/cc (x10 ⁶)	Cell Viability (%)
LipoCube Hybrid SVF	1,89	96,2
Enzymatic (Traditional) Method	1,85	95,72

LipoCube Hybrid SVF contains approximately the same number of nucleated cells as enzymatic method.

FLOW CYTOMETER RESULTS



CELL DIFFERENTIATION

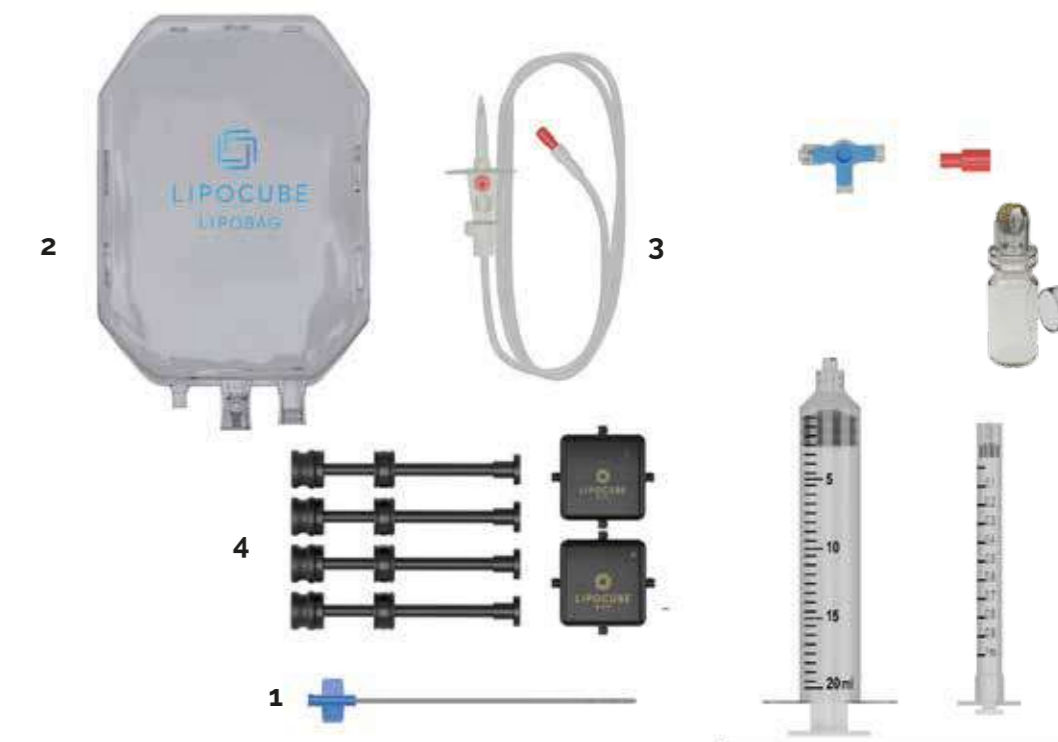


Due to high cell yield and cellular activity, LipoCube Hybrid has a higher regenerative power.

* Tiryaki T, Cohen SR, Canikyan Turkyay S, Kocak P, Sterodimas A, Schlaudraff KU, Akgün Demir I, Agovino A, Kul Y. Hybrid Stromal Vascular Fraction (Hybrid-SVF): A New Paradigm in Mechanical Regenerative Cell Processing. *Plast Reconstr Surg Glob Open.* 2022 Dec 30;10(12):e4702.

LIPOCUBE SVF KIT

LipoCube products provide a closed-system solution for washing, fragmenting, and transferring autologous adipose tissue.



Fat is harvested from the body using a fat harvesting cannula (1) within a closed system. The harvested fat is then washed using a transfer bag (2) and transfer line (3). Next, the washed fat is processed through the LipoCube Hybrid (4) to obtain concentrated fat. This concentrated fat can be applied to the patient using a 25G injector or topically using the Liporoller (5).

BEFORE & AFTER



Romberg Syndrome
42cc Hybrid SVF fat injection
Single Session



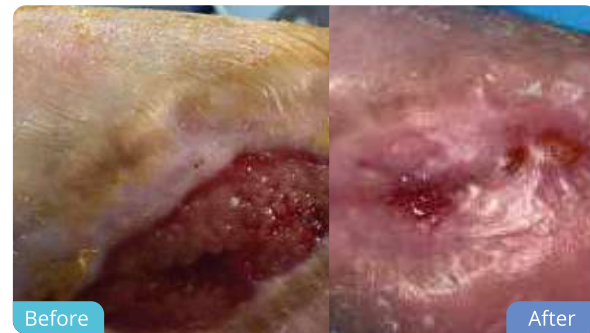
SVF Enhanced Facelift
19cc Hybrid SVF fat injection
Single Session



Anti-aging Treatment
36cc Hybrid SVF fat injection
Single Session



Liposuction Defect
80cc SVM
Single Session



Buerger Disease
60cc SVM
Single Session



Total Mastectomy
270cc SVM
Single Session

with courtesy of Dr. Tunc Tiryaki, Dr. Steve Cohen and Dr. Alper Erkin



Dr. Steven R. Cohen



Dr. Tunc Tiryaki



Dr. Kai-Uwe Schlaudraff



Dr. Aris Sterodimas



www.lipocube.com

LIPOCUBE
Kennington Lane 239-241
London UK SE11 5QU
+44 (78) 1001 8871
info@lipocube.com

LIPOCUBE
HYBRID

Mechanical SVF Isolation Device



**LAB
IN THE
BOX**

Autologous | Enzyme Free | Single Use | Easy to Use



ADVANTAGES

Miniumum manipulation
of cell

Head to head
cell counts

Easy to use

No need for GMP facility

Short isolation time

No need for expert staff

Cost efficient